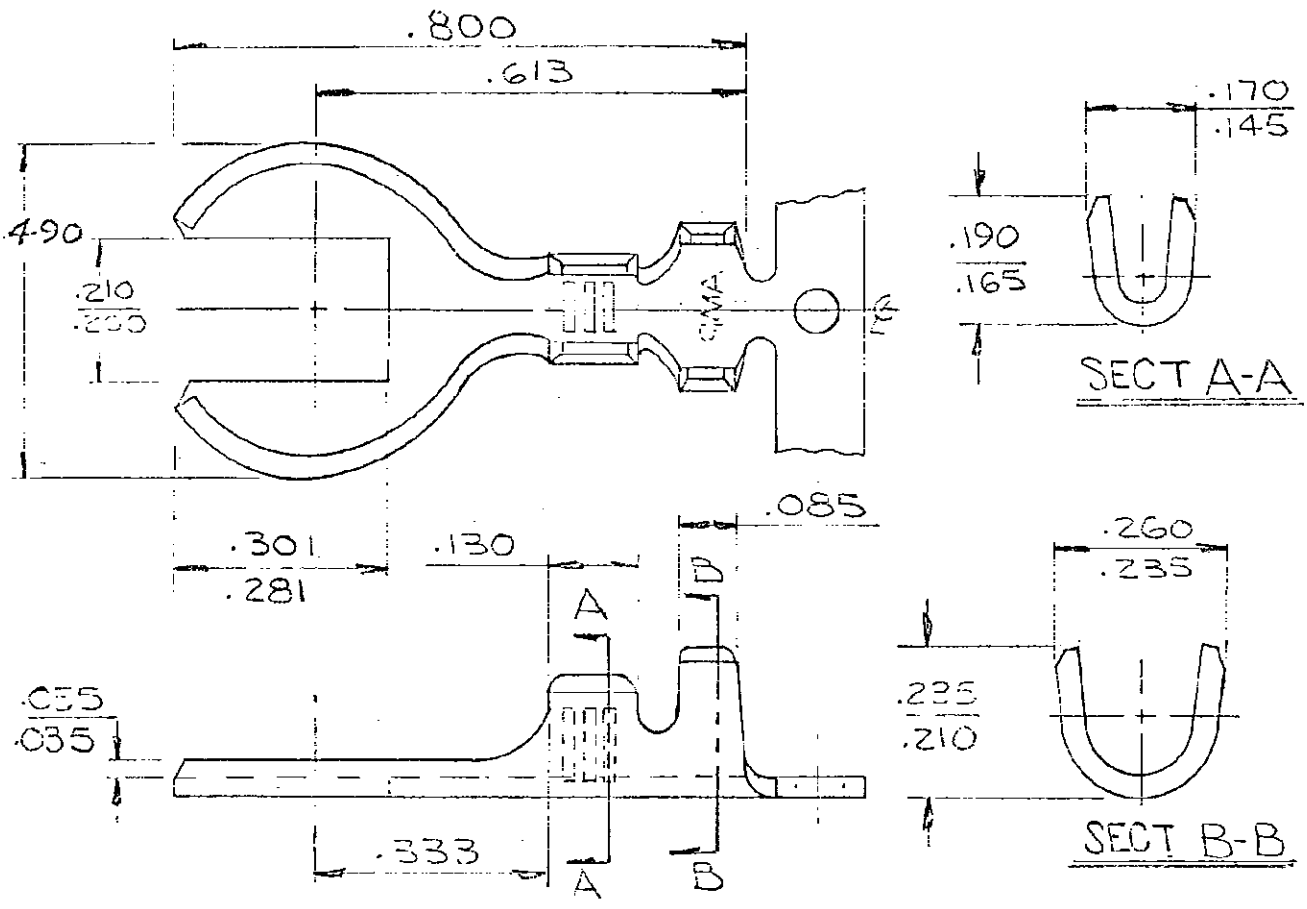


NUMBER
 60998



1. CONTINUOUS STRIP, ON REELS

WIRE SIZE AWG	INSULATION RANGE	MATERIAL AND FINISH	TERMINAL NUMBER
18-14	.120-.180	.031 COPPER-TIN	60998-1
18-14	.120-.180	.031 COPPER-TIN	60998-2

2. 60998-2 IS REVERSE REEL OF 60998-1

DIMENSIONS IN INCHES, DO NOT SCALE PRINT

G	REV PER 0155-94	PMF	6/1	4/19/74
F	REV PER	A899	JB	7/1
E	REVISED	A899	JB	7/1
D	REVISED	A878	JB	7/1
C	REVISED	A810	em	5/11
B	REVISED	A-799	CEB	5/11
A	REVISED	A780	CM	5/11

© 1966 BY AMP INCORPORATED. ALL RIGHTS RESERVED. AMP PRODUCTS COVERED BY PATENTS AND/OR PATENTS PENDING.

CUSTOMER COPY REFERENCE ONLY

AMP AMP INCORPORATED HARRISBURG, PENNA.

CLASS

WIRE — RANGE — INSULATION TYPE

PRINTED AT

50

DR. MEYER

CHK. 3/1/74

APP.

TOLERANCE EXCEPT AS NOTED ± .015 ± .004

SCALE 4-1

LOC. 1111

NO. 60998

REV. 16

NAME SPADE